

2-Way Coaxial Full-Range All Environment Loudspeaker System



- Superb audio quality with articulate low end**
- Fully weatherproof construction**
- One-piece, 1/2" thick molded cabinet**
- Molded-in colors will not crack or fade. Black standard, 12 optional colors**
- Comprehensive warranty: 10 year cabinet, 5 year hardware, 2 year electronics**
- Molded in 3/8-16 T-nuts allow for flying and bracket mounting**
- 1.5" stand-mount socket on each side**
- Three layer WeatherTech™ grill**
- Self-draining cabinet design**
- Tour Model configuration adds self-casing, gasketed lid and easy grip handles**
- Mil-Spec 810E compliant**

The Berlin was designed for use in abusive, real-world situations, both on the road or in permanent installations. Combining super-rugged, military road case technology with a number of acoustic innovations, the Berlin is a powerful and musically accurate loudspeaker.

The Berlin is the perfect unit for any application where compact size and high power are required. The 2" compression driver used in the Berlin provides clean, defined sound in any environment. Even though the Berlin is only 10.5" deep, Technomad's unique cabinet tuning delivers exceptional bass extension, articulation, and pitch. The Berlin is very EQ compliant and offers the user unrivaled control over every type of program material. Only the highest quality capacitors and heavy gauge inductors are used in Technomad networks, minimizing insertion loss and resulting in smooth response throughout the operating bandwidth. The 15" bass drivers are treated for maximum weatherproofness.

The Berlin was designed for maximum flexibility and ease of use. It can be easily stacked or tripod-mounted with 1.5" diameter stand-mount sockets molded into the cabinet on all four sides. With threaded insert flypoints on all sides, a Berlin can be easily be flown. Threaded inserts on the rear of the loudspeakers allow the Berlin to be bracket-mounted using the AS Series universal wall-mount bracket. The Tour Model includes a lid to protect the speaker during transport and latches onto the back of the cabinet when the loudspeaker is being used, to prevent loss. A large handle on each end makes carrying the Berlin extremely easy. All hardware, including the grill, is black stainless steel to prevent corrosion and is recessed to prevent damage during shipment.

Technomad Berlin loudspeakers are used worldwide in applications ranging from FOH systems in concert halls to high powered sound effects in theme parks.

Audio Specifications

Frequency Response	50 Hz- 20 kHz (+/- 2 dB) 40 Hz- 18 kHz (+/- 10 dB)
Maximum Continuous Power	900 watts
Maximum Peak Power¹	1800 watts
Recommended Amplifier Power	1000 watts
Sensitivity *	100.8 dB SPL
Maximum Output (long term)¹ **	130.3 dB SPL
Maximum Output (peak)	133.3 dB SPL
HF Dispersion	120° V x 120° H
Nominal Impedance	8 ohms

¹ Based on ALMA EIA test 426B / AES 1984 Rev. 2003

* RTA total output, axial, 1W@1M

** Based on Maximum Continuous Power rating

Physical Specifications

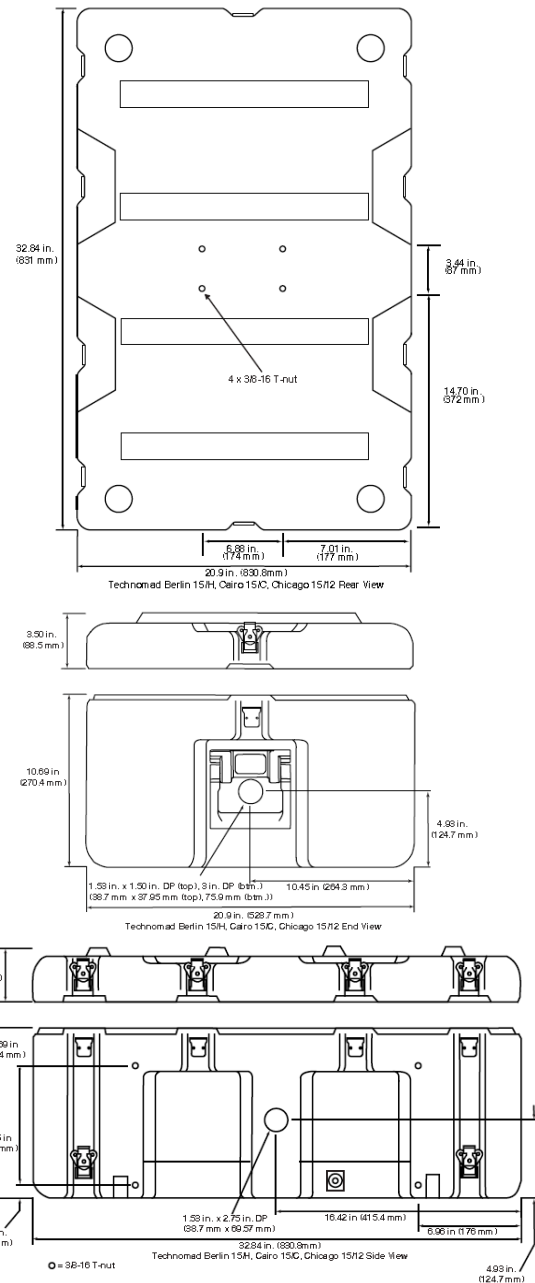
Height	32.9"	83.8 cm
Width	20.9"	52.8 cm
Depth	10.7"	27 cm
Weight	90 lb.	40.8 kg
Shipping Weight	92 lb.	41.7 kg
Fittings	16x 3/8-16 inserts 4x 3/8-16 inserts 2x 3/18-18 sides	sides rear yoke points top, bottom, sides
Tripod socket	4	
Cabinet	recycled MDPE	
Grill	16G stainless WeatherTech™	

Signal Chain

High Frequency	2" compression driver
Low Frequency	15" cone driver
Connectors	2x Neutrik™ NL4MP Speak-on
Crossover	Passive internal

Available Options

Mounting Options	Wall-mount brackets Yoke-mount brackets Pole-mount Adaptor
70V transformer	400 watt fixed tap
Color (grill and cabinet)	12 optional colors
Custom termination	



Architectural and Engineering Specifications

The loudspeaker system shall be of two-way type consisting of one 15" low frequency cone type transducer in a vented direct radiating enclosure and 2" compression driver.

The system shall meet the following performance criteria: Frequency Response: 50 Hz -20 kHz. Power Handling: 900W. Impedance shall be 8 ohms. High frequency dispersion shall be 120° H x 120° V. The system shall include an internal passive crossover network, providing full range operation via 2 Neutrik™ NL4MP connectors. The cabinet shall be molded from mid-density, (100% recycled if black) polyethylene. All cabinet dyes shall be non heavy metal based. The cabinet shall meet Mil-Spec

810E and be ATA-III compliant. The cabinet shall have a 10 year warranty.

The system shall include 1.5" stand mount sockets on four sides. The system will include 3/8-16 threaded inserts for mounting and rigging. The system shall have an optional fully gasketed lid. All drivers shall be protected by a three-layer chemically treated grill system.

The loudspeaker system shall be the Technomad Tour Model Berlin 15/H.